



DEVELOPMENT PLAN PANEL

Meeting to be held in Civic Hall, Leeds on
Tuesday, 5th May, 2009
at 1.30 pm

MEMBERSHIP

Councillors

B Anderson
J Blake
B Cleasby

C Fox (Chair)
P Gruen
T Hanley

R Harker
T Leadley
A Ogilvie

A Parnham

Agenda compiled by:
Tel no:
Governance Services
Civic Hall
LEEDS
LS1 1UR

Gerard Watson
395 2194

A G E N D A

Item No	Ward	Item Not Open		Page No
1			<p>APPEALS AGAINST REFUSAL OF INSPECTION OF DOCUMENTS</p> <p>To consider any appeals in accordance with Procedure Rule 25 of the Access to Information Rules (in the event of an Appeal the press and public will be excluded)</p> <p>(*In accordance with Procedure Rule 25, written notice of an appeal must be received by the Chief Democratic Services Officer at least 24 hours before the meeting)</p>	
2			<p>EXEMPT INFORMATION - POSSIBLE EXCLUSION OF THE PRESS AND PUBLIC</p> <p>1 To highlight reports or appendices which officers have identified as containing exempt information, and where officers consider that the public interest in maintaining the exemption outweighs the public interest in disclosing the information, for the reasons outlined in the report.</p> <p>2 To consider whether or not to accept the officers recommendation in respect of the above information.</p> <p>3 If so, to formally pass the following resolution:-</p> <p>RESOLVED – That the press and public be excluded from the meeting during consideration of those parts of the agenda designated as containing exempt information on the grounds that it is likely, in view of the nature of the business to be transacted or the nature of the proceedings, that if members of the press and public were present there would be disclosure to them of exempt information.</p>	

Item No	Ward	Item Not Open		Page No
3			<p>LATE ITEMS</p> <p>To identify items which have been admitted to the agenda by the Chair for consideration.</p> <p>(The special circumstance shall be specified in the minutes).</p>	
4			<p>DECLARATION OF INTERESTS</p> <p>To declare any personal / prejudicial interests for the purpose of Section 81(3) of the Local Government Act 2000 and paragraphs 8 to 12 of the Members' Code of Conduct.</p>	
5			<p>APOLOGIES FOR ABSENCE</p> <p>To receive any apologies for absence from the meeting.</p>	
6			<p>MINUTES OF THE PREVIOUS MEETING</p> <p>To approve the minutes of the Development Plan Panel meeting held on Tuesday, 10th March 2009.</p>	1 - 4
7			<p>REGIONAL UPDATE REPORT</p> <p>To consider the report of the Director of City Development providing an update on the new arrangements for Spatial Planning within Yorkshire and the Humber, following the implementation of the conclusions of the Sub National Review.</p>	5 - 12

Item No	Ward	Item Not Open		Page No
8			<p>EASEL AREA ACTION PLAN - PROGRESS REPORT</p> <p>To consider the report of the Director of City Development providing an update on the recent progress made in preparation of the EASEL Area Action Plan (AAP), and outlining the next steps, particularly with respect to proposals for further consultation and information sharing on the proposed plan changes with residents and stakeholders.</p>	13 - 22
9			<p>DATE AND TIME OF NEXT MEETING</p> <p>1.30pm on Tuesday, 9th June 2009 in the Civic Hall, Leeds (To be confirmed)</p>	

Development Plan Panel

Tuesday, 10th March, 2009

PRESENT: Councillor C Fox in the Chair

Councillors B Anderson, J Blake,
B Cleasby, T Hanley, R Harker, T Leadley
and L Yeadon (substitute)

31 Chair's Opening Remarks

The Chair welcomed all in attendance to the meeting, including Councillor Yeadon who was attending as a substitute for Councillor Gruen.

32 Apologies for Absence

Apologies for absence from the meeting were received on behalf of Councillors Gruen, Ogilvie and Parnham.

33 Minutes of the Previous Meeting

RESOLVED- That the minutes of the previous meeting held on 6th January 2009 be approved as a correct record.

34 Matters Arising from the Minutes

The Housing Challenge: The Yorkshire and Humber Plan – 2009 Update (Minute No. 28 refers)

Having discussed the number of responses which had been received by the Yorkshire and Humber Regional Assembly in relation to the informal consultation exercise undertaken on the 2009 update of the Yorkshire and Humber Plan, the Panel was advised that as part of a related inquiry, the Assembly had invited representatives of the Council to attend a meeting on 13th March 2009 to discuss matters concerning the housing market and housing provision.

Members noted that the arrangements for the meeting would be forwarded to those interested in attending.

35 Leeds Local Development Framework Natural Resources and Waste Development Plan Document - Progress Report

A report was submitted by the Director of City Development providing an update on the progress which had been made in relation to the Natural Resources and Waste Development Plan Document (NRWDPD), detailing the outcomes from the 'Issues and Alternative Options' stage of the process and outlining the future proposals which would eventually lead to the document's submission and independent examination.

The Panel noted that a consultation exercise had been undertaken as part of the 'Issues and Alternative Options' stage and that the results from that exercise had been incorporated into a 'consultation report' prepared on behalf of the Council by Jacobs Engineering UK Limited. The report, which also

provided details of the methodology used and the lessons learned from the consultation process was appended to the covering report for Members' information.

Having received a brief presentation from Jenny Williams and Alice Martin of Jacobs Engineering UK Limited, which summarised the key points within the consultation report, a question and answer session then ensued. The main areas of debate were as follows:-

- The Panel received clarification regarding the arrangements in place when formally submitting the NRWDPD for independent examination;
- Members discussed the range and variety of responses which had been received, and highlighted the need for the report to emphasise that responses from individual Councillors were not necessarily representative of the Council as a whole;
- The Panel noted that a number of statutory consultees had not provided responses in relation to several key themes and recommended that where no responses had been received, opinions were sought from such organisations in order to gain a clear indication of their views;
- With regard to the data arising from the Natural Resource Flow Analysis and Ecological Footprint exercise, Members sought clarification around the classification of land use across the city and the geographical area covered by the exercises;
- Members suggested that the issue of housing emissions was included as part of any further analysis exercise;
- The Panel received an update on the number of responses received from neighbouring local authorities, and noted the differing stages that those authorities were at in terms of developing their own respective NRWDPDs;
- Members sought clarification on the way in which all comments received, particularly those from the eleven supermarket exhibitions, had been presented within the consultation report;
- The Panel invited officers to ensure that where appropriate all relevant documentation related to the current Ward boundaries;
- Members made enquiries into the ways in which future related consultation exercises could be improved, how a wider and more geographically diverse section of the population could be involved and whether the views of those communities who may be particularly affected by the NRWDPD could be specifically sought;
- The Panel discussed the extent to which the ongoing consultation exercises being undertaken in relation to the potential options for future waste management systems were being incorporated into the NRWDPD development process;
- Members highlighted the importance for the views of all Parish and Town Councils in the area to be sought on the NRWDPD.

In conclusion, the Panel received a summary of the next steps in the development of the NRWDPD prior to its submission, and were assured that the consultation report would be amended to reflect all of the comments made during the meeting.

RESOLVED –

- (a). That the comments made in relation to the consultation report be noted and incorporated into the document;
- (b). That the progress which has been made with respect to the preparation of the Leeds Development Framework Natural Resources and Waste Development Plan Document be noted, along with the proposed next steps to develop the document, which include the production of the policy position and the submission drafts.

(Councillor Blake joined the meeting at 1.45 p.m., during the consideration of this item)

36 Date and Time of Next Meeting

Tuesday, 7th April 2009 at 1.30 p.m. in the Civic Hall, Leeds.

This page is intentionally left blank



Originator: David Feeney

Tel:0113 2474539

Report of the Director of City Development

Development Plan Panel

Date: 5 May 2009

Subject: Regional Update

Electoral Wards Affected:

All

Ward Members consulted
(referred to in report)

Specific Implications For:

Equality and Diversity

Community Cohesion

Narrowing the Gap

Eligible for Call In

Not Eligible for Call In
(Details contained in the report)

Executive Summary

- Following the preparation and implementation of the Sub National Review, organisational and governance structures at a Regional level have now changed. These changes have been brought into effect from 1 April 2009 and have implications for the Regional Spatial Strategy (RSS) process in Yorkshire & the Humber and as a consequence, upon the preparation of Local Development Framework (LDF) documents at a local level. The purpose of this report is to provide Development Plan Panel members an overview of the changes and to note the implications for the RSS and LDF process.

1.0 Purpose of this report

- 1.1 The purpose of this report is to update Development Plan Panel members on the new arrangements for Spatial Planning within Yorkshire & the Humber, following the implementation of the conclusions of the Sub National Review.

2.0 Background information

The Sub-National Review of Economic Development and Regeneration

- 2.1 The Review of Sub-National Economic Development and Regeneration - SNR - was first announced by Government in the 2006 Budget. Its aim was to take stock of the various measures that Government had put in place since 1997 to improve economic development across the regions and tackle pockets of deprivation.

- 2.2 The SNR was seen as an integral part of the Government's announcements around promoting greater devolution and ensuring regions and local areas play a greater role in tackling the challenges they face. It also supported the focus on strong cities and city-regions as key drivers for economic and social prosperity. Nevertheless, there were some concerns amongst councils that the focus on regional governance could actually serve to undermine the roles and responsibilities of local authorities as the democratic leaders of their communities.

- 2.3 The outcome of the SNR was published in July 2007, recommending that Local Authorities be given new powers and incentives to drive local prosperity, economic growth and regeneration, tackle social deprivation and address inequality. It called for regional governance to be simplified, and recommended that existing strategies at the regional level – such as Yorkshire Forward's Regional Economic Strategy and the Yorkshire and Humber Assembly's Regional Spatial Strategy and Regional Framework - be integrated and re-assessed.

Implementing the SNR

- 2.4 Following publication of the SNR, the Department for Communities & Local Government (CLG) and Department for Business, Enterprise & Regulatory Reform (BERR) carried out a consultation exercise on how to take the recommendations forward. In November last year CLG and BERR published their joint response, which committed Government to:

- creating a new duty on local authorities to carry out economic assessments of their areas, in line with Government guidance;
- creating new statutory (but voluntary) sub-regional authorities for economic development purposes and also allowing for the creation of "multi-area agreements" for authorities to work together towards shared economic objectives;
- giving the Regional Development Agencies (RDAs) – e.g. Yorkshire Forward – joint responsibility, with a Board of Local Authority Leaders, for the production, implementation and monitoring of a new single Integrated Regional Strategy (IRS); and
- bring to an end the Regional Assemblies, including the Yorkshire and Humber Assembly, in their current form and instead provide Local Authority Leaders and the RDAs collaborative responsibility for regional spatial planning matters.

What this means for Yorkshire & the Humber

- 2.5 In anticipation of the new regional arrangements and the need for local government and the Regional Development Agencies (RDAs) to work jointly on the new single Integrated Regional Strategy (IRS), LGYH and Yorkshire Forward submitted a

combined response to government consultation, explaining how it was proposed to work together to make the Government's proposals work for Yorkshire and the Humber.

- 2.6 The LGYH and Yorkshire Forward model (see Appendix 1) breaks the region down into four City-regions or "Functional Sub Regions" (FSRs), namely: the Leeds City Region; Sheffield City Region; Hull and the Humber Ports; and York and North Yorkshire. Each FSR will develop their own, sub-regional arrangements to promote greater economic prosperity by enhancing links between local authorities in these areas.
- 2.7 The Yorkshire & Humber model has been identified as good practice. Regional governance structures will be responsible by the end of this year for taking forward the IRS for Yorkshire and Humber:
- A LGYH "Leaders' Board", consisting of 8 council Leaders (2 from each FSR), working alongside Yorkshire Forward's Board, as a "Joint Regional Board" (JRB) to lead on the IRS and regional spatial planning decisions.
 - Four Thematic Boards, to provide expert strategic advice to the JRB on the issues of Planning, Regeneration and Housing, Work and Skills, and Transport. Two of these Boards are to be chaired by LGYH representatives and two by Yorkshire Forward.
 - A separate Independent Board to provide challenge on the subject of sustainability and ensure that this is reflected across all Thematic Boards.
 - LGYH-led networks of council Leaders and Chief Executives to ensure that wider health, community safety and cultural issues can be built into the single IRS.
- 2.8 In the meantime, before the new legislation is in place, Yorkshire Forward and LGYH have agreed interim arrangements to make sure that regional planning decisions can continue to be made following the decision to dissolve the Yorkshire & Humber Assembly on 1 April 2009.
- 2.9 The Yorkshire & Humber model ensures that the four Functional Sub-Regions, all 22 local authorities, police authorities, fire and rescue authorities, National Parks – and, through them, the numerous voluntary, neighbourhood and community partners – can work together to ensure that the new single IRS and subsequent delivery plans are built, genuinely, from local-level and FSR priorities.
- 2.10 From 1st April the functions of the Assembly will be split between Local Government Yorkshire and Humber (LGYH) and Yorkshire Forward, who will be jointly responsible for regional arrangements from this date. I have attached a briefing note giving you details of the Sub National Review, along with information on the impact on Yorkshire and Humber of the new regional arrangements. Also attached is a copy of the press release submitted by LGYH and Yorkshire Forward this week giving you more information.
- 2.11 From 1st April the functions of the Assembly will be split between LGYH and Yorkshire Forward, with the two organisations supporting a new Joint Regional Board – made up of eight members of the Yorkshire Forward Board and eight Council Leaders - responsible for developing an Integrated Regional Strategy that delivers sustainable economic growth in Yorkshire and the Humber.
- 2.12 LGYH will be leading on the 'housing and regeneration' and 'spatial planning' functions within a team developing the Integrated Regional Strategy. The 'transport'

and 'work and skills' functions will be transferred to Yorkshire Forward with the Assembly employees currently working on these agendas transferring to them after the 1st April. From this date LGYH will lead on:

- The People, Places and Partnerships agenda
- Workforce and Organisational Development
- The Improvement and Efficiency agenda (RIEP)
- Housing and Regeneration
- Spatial Planning (including : The need to request the opinion of the Regional Planning Body as to the general conformity of Development Plan Documents with the Regional Spatial Strategy, when they are published prior to submission to the Secretary of State (Regulation 29, 2008). There is still a need also, to consult the Regional Planning Body on regionally significant applications that are likely to affect the implementation of the Regional Spatial Strategy (as set out in the criteria for identifying such applications issued in December 2007 by the Assembly).

3.0 Main issues

Regional Spatial Strategy Update

- 3.1 In January 2009, Development Plan Panel considered a proposed response to the Regional Spatial Strategy Update. Members will recall, that following the Adoption of the Regional Spatial Strategy (The Yorkshire & Humber Plan) in May 2008, the Yorkshire & Humber Assembly undertook a period of informal consultation on a 2009 Update. The focus of the consultation material was upon how to 'accommodate the Region's need for new homes over the next two decades'. Within this context, the "Spatial Options" consultation material sets out a number of key questions regarding the scale and distribution of housing growth and how to best meet the accommodation needs of gypsies, travellers and travelling showpeople.
- 3.2 The period of informal consultation on this material closed on 30 January 2009 and via Development Plan Panel and Executive Board, the City Council submitted a formal response. Following receipt of representations, the Regional Assembly (now Local Government for Yorkshire & the Humber) have been undertaking the following activities:
- Review the representations received
 - Continuing to develop the evidence base
 - Hosting a "Housing Enquiry" to review the position on housing (Held on 13 April and Chaired by Professor Ian Cole, Sheffield University)
 - Reviewing options for the next stages of the RSS Update process.
- 3.3 In reviewing options for the next stages of the RSS process, the Regional Planning Board (18 March) has considered three possible alternatives. These were: to continue with the original RSS Update timetable, to continue the process but to be more targeted at addressing particular technical issues (including managing flood risk in East Yorkshire) or to merge the RSS Update process in to the early stages of the preparation of the new Integrated Regional Strategy (the regional strategic document to eventually replace the Regional Economic Strategy & Regional Spatial Strategy). The Regional Planning Board was subsequently minded to recommend that the third option should be adopted and for this to be considered by the Joint Regional Board (see Appendix 1) at its meeting in May/June.

- 3.4 Whilst the regional position is evolving, it should be emphasised that the Leeds LDF documents, 'will need to be in general conformity', with the RSS adopted in May 2008 and that the preparation of the new Integrated Regional Strategy (once adopted), will have an influence upon longer term spatial planning and economic development within the city. With regard to the adopted RSS, there are a number of positive areas which reflect and support local Leeds objectives and priorities but the scale of the housing challenge remains a fundamental challenge to be addressed going forward.

4.0 Implications for council policy and governance

- 4.1 None at this stage

5.0 Legal and resource implications

- 5.1 The preparation of Leeds Local Development Framework documents, need to be in general conformity with the Regional Spatial Strategy (Yorkshire & Humber Plan) and the future Integrated Regional Strategy.

6.0 Conclusions

- 6.1 This report has set out the 'headline' changes, at a regional level, arising from the preparation and implementation of the Sub National Review. These have implications for the LDF process in Leeds now and in the future in terms of both technical issues and governance arrangements.

7.0 Recommendations

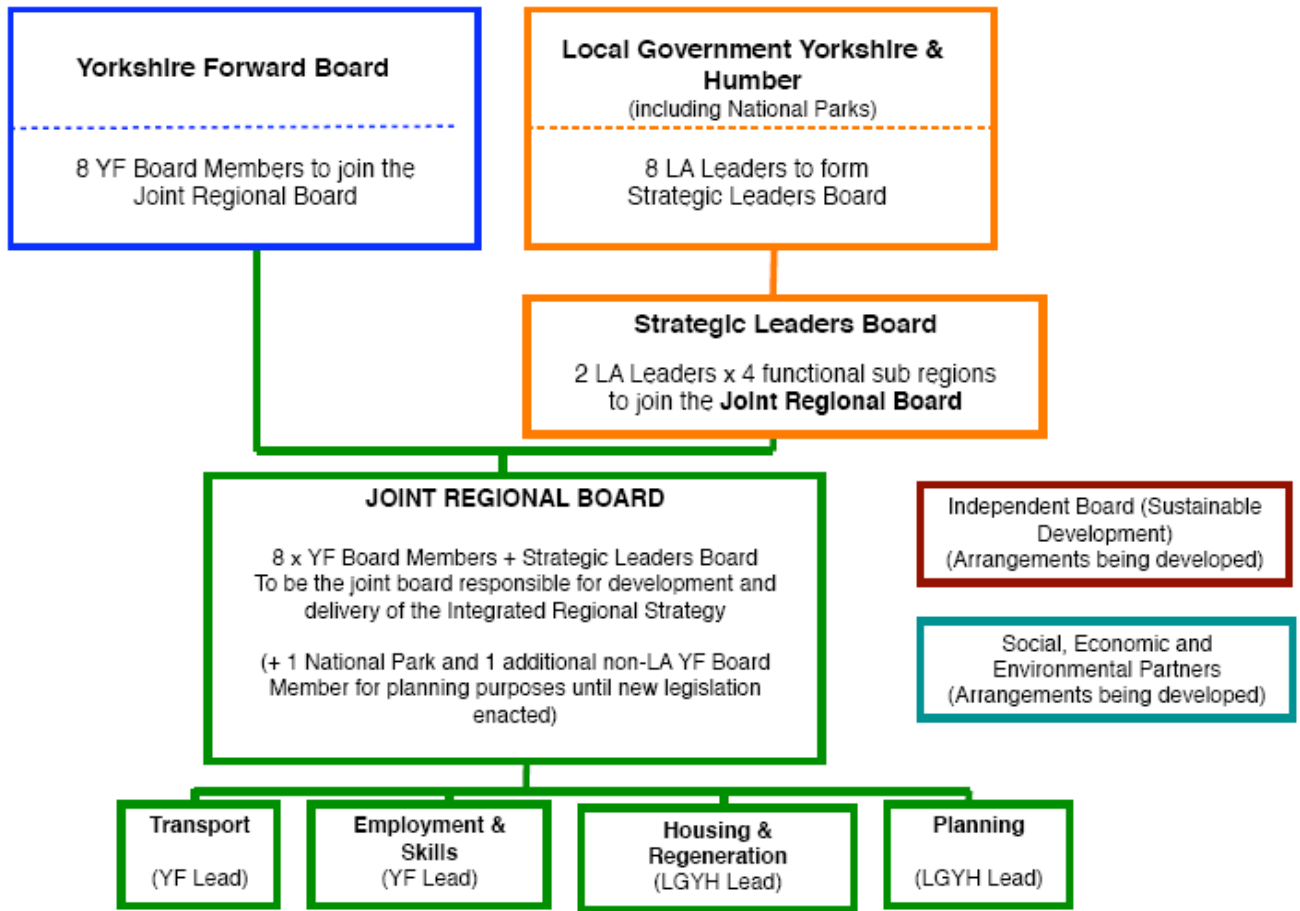
- 7.1 Development Plan Panel is recommended to note the contents of this report.

Background Papers

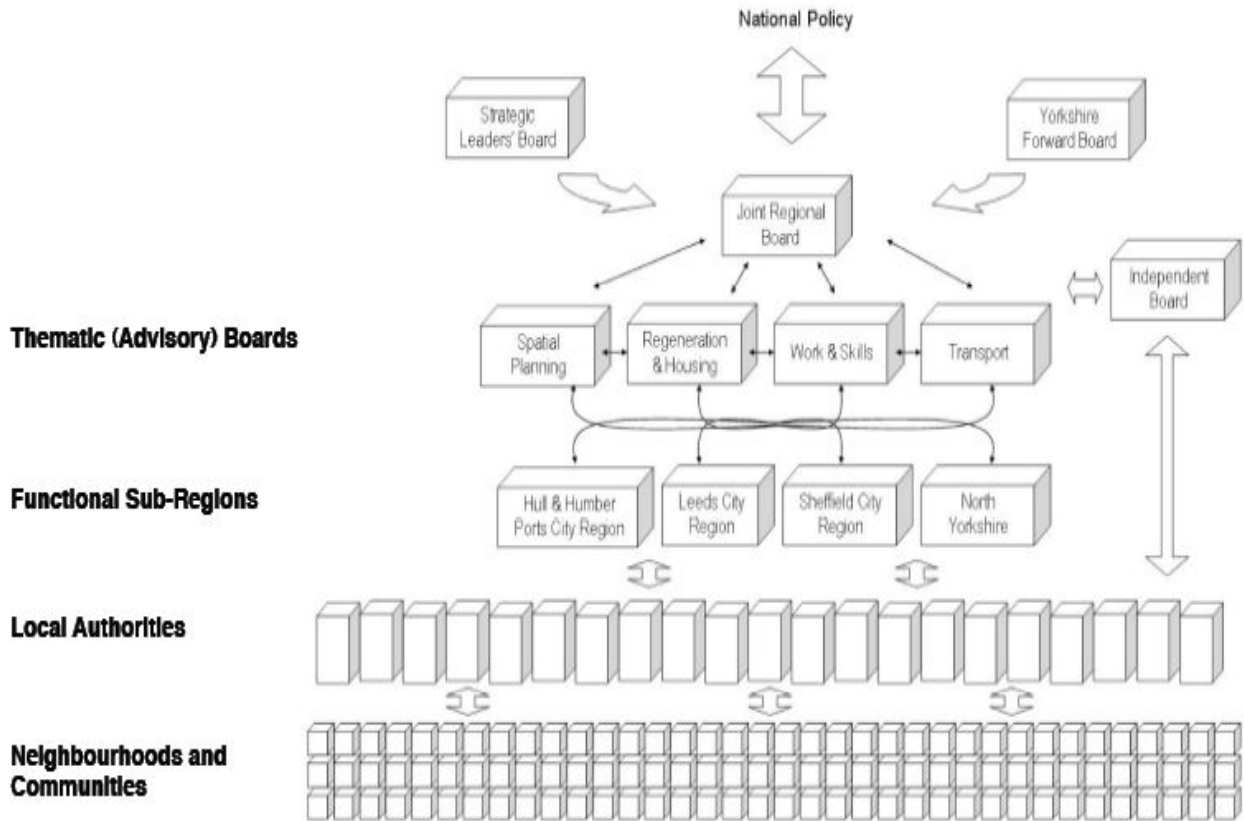
Regional Spatial Strategy

Appendix 1: Regional Governance Arrangements

Regional Governance Arrangements from 1 April 2009



Summary of Regional Governance Structure Proposals



This page is intentionally left blank



Originator: Sue Speak

Tel: 2478079

Report of the Director of City Development

Development Plan Panel

Date: 5 May 2009

Subject: EASEL Area Action Plan – Progress Report

Electoral Wards Affected:

Gipton & Harehills

Burmantofts & Richmond Hill

Killingbeck & Seacroft

Temple Newsam

Specific Implications For:

Equality and Diversity

Community Cohesion

Narrowing the Gap

EXECUTIVE SUMMARY

1. An Area Action Plan (AAP) is being prepared for East and South East Leeds (Easel). The purpose is to provide a land use and spatial planning framework within a 'key area of change' within the city. Members will recall that the plan has been subject to "Preferred Options" consultation. The purpose of this report is to provide a further update on progress in preparation towards submission of the plan for independent examination and to advise members of the scope and format of the forthcoming public consultation and information sharing process which is to take place during the summer.

1.0 Purpose Of This Report

- 1.1 To advise and update Development Plan Panel on recent progress on the preparation of EASEL AAP, and outline the next steps, particularly relating to proposals for further consultation and information sharing on the proposed plan changes with residents and stakeholders.

2.0 Background Information

- 2.1 Members will recall that an update was given on progress on preparation of the EASEL AAP at the Development Plan Panel meeting of 6th January 2009. The update related to:
- the scale of development and the difficulty in identifying potential longer term development sites, given that they are likely to include existing housing, which could lead to planning blight, failure to sell property or uncertainty about carrying out improvements
 - the intention to prepare Neighbourhood Plans for each of the EASEL communities in tandem with preparation of the AAP
 - 4 technical studies in preparation to demonstrate the “soundness” of plan:
 - EASEL and Aire Valley town and local centre assessment
 - EASEL drainage strategy
 - EASEL transport strategy
 - Greenspace review

3.0 Recent Progress

EASEL and Aire Valley town and local centre assessment

- 3.1 A key element of sustainable communities, is the provision of a good network of local facilities which can act not only as a community “hub” but also reduce the need to travel to facilities further a field. Consultants, White Young Green were appointed to provide an overview of town and local centres and neighbourhood parades in EASEL and communities closest to Aire Valley Leeds (AVL) and to advise on a strategy for development of town and local centres and the location of uses within both EASEL and AVL areas. The study is now nearing completion with publication expected in May. Telephone, in-street, and business surveys were undertaken in autumn 2008, alongside physical surveys of the use of the units in centres and neighbourhood parades in EASEL and those close to AVL. There is a clear need to improve the local ‘offer’ of future retail and service facilities within the EASEL and AVL area, to meet the day to day shopping needs of existing and future local residents.
- 3.2 Seacroft and Cross Gates town centres are the dominant shopping destinations within EASEL. The consultants consider that it is essential to ensure that their role and function are maintained, by protecting the current uses within them, promoting environmental improvements, and restricting out of centre development elsewhere in EASEL. Other town centres also play important roles and would benefit from similar approaches.
- 3.3 White Young Green estimate that additional food superstore provision totalling approximately 5,700 sqm (gross) could be supported up to 2013, which should be within the western part of the EASEL AAP area - to reduce current travel distances for residents in these neighbourhoods. The former Tradex site on the edge of Harehills Lane town centre (which has a recent application by Morrisons currently pending) and the All Saints (Great Clothes) site on York Road in Richmond Hill, are

considered to be the most viable and sustainable options. All Saints could become a new town centre alongside re-provision of the existing school, church, etc. For comparison goods (i.e. non-food), there is a potential floorspace requirement of up to 2,780 sqm (net) by 2013 (although some of this is assumed to be contained within any food superstore provision). The extension to Seacroft town centre previously proposed in the AAP is not deemed to be a preferable option. This is on the basis that there is a greater need to provide facilities in the western part of EASEL and a limit to the level of retail facilities which can be introduced without causing viability issues in other centres. The study has also identified and clarified the network of local centres and neighbourhood parades, and confirms their important role for local residents. Appendix 1 identifies each of the centres within EASEL and their suggested status within the retail hierarchy. The consultants' recommendations for AVL will be reported separately.

EASEL drainage strategy

- 3.4 Major flooding incidents suffered by residents in parts of East Leeds in recent years, coupled with the prospect of a significant level of new development within the EASEL area, could result in an increase in flood risk by increasing impermeable areas. This would clearly not be acceptable. It is important to be able to demonstrate that new development will not exacerbate existing problems but can indeed assist in resolving flooding problems.
- 3.5 In seeking to address these issues, consultants Jeremy Benn Associates were appointed to develop a strategic approach to draining development sites and future regeneration areas within EASEL AAP. The EASEL area is predominantly served by a system of combined sewers with combined sewer overflows discharging excess storm water to the watercourses. It is the norm now for new developments to be required to introduce separate systems of drainage for foul and surface water drainage. The difficulty is that promoting a separate system of drainage potentially adds to more surface water discharging into watercourses which could increase flows and add to flooding risk. The problem needs to be tackled strategically to ensure reductions in flows.
- 3.6 Good progress has been made in establishing critical flood areas which are important in structuring a strategy. Six strategic sub-catchment areas have been defined within the EASEL area and the key issues, overall strategy and integrated solutions identified for each. These include infiltration methods including swales, detention/infiltration basins, storage tanks, attenuation basins, strategic storage for clusters of sites, overland flow capture using green infrastructure and opening up of culverts. Further work continues to develop adoption, maintenance and management strategies, costing of the recommended measures and opportunities for habitat enhancement.

EASEL transport strategy

- 3.7 The City Council's strategic partner, Mouchel were appointed to establish a strategy to improve the sustainability of transport and movement in the EASEL area. This involved establishing the growth in travel demand based on the AAP development scenario, reviewing the transport interventions set out in the AAP and establishing an implementation and delivery mechanism.
- 3.8 The strategy which is being developed suggests specific actions and interventions which are required to meet current gaps in transport provision or meet changes in demand resulting from AAP development proposals. Mouchel's have concluded

that overall, the expected change in traffic demand as a result of the EASEL proposals will be relatively small and will be focused on key corridors. Some of this increased demand is likely to be attracted to public transport and will not appear as traffic on the roads. There will be increases in traffic demand resulting from changes outside EASEL which will impinge on the highway network and may necessitate some local improvements, especially at key junctions, in order to remove the adverse impacts of local congestion. There are likely to be significant increases in demand for public transport in peak periods between EASEL and employment opportunities in the city centre and AVL.

3.9 Within the context of this work, a possible programme and likely costs and sources of funding is being developed. The interventions proposed by the consultants include:

- Improvements to public transport on both radial corridors and orbital routes, Improvements to integrated ticketing for public transport serving EASEL,
- Provision of new and improved public transport interchange facilities,
- Improvements to community transport,
- Introduction of a neighbourhood travel team,
- A high occupancy vehicle lane on A58/Easterly Road,
- Outbound bus priority measures on Roundhay Road,
- Bus priority measures on South Parkway,
- A new Quality Bus Corridor through EASEL centred around a bus only link between Gipton and Harehills,
- Traffic management measures at and around Harehills Corner,
- Upgrading of Cartmel Drive to connect to an agreed new road link between EASEL and Aire Valley Leeds at Halton Moor.

4.0 Next Steps

4.1 Work is continuing on the citywide greenspace review which will be used to prioritise greenspace improvements and potential remodeling of greenspace areas. When complete it is the intention that each of the above studies will be published on the council's website prior to publication of the AAP and used to inform development of policies and site allocations.

4.2 Work is ongoing to establish a delivery and implementation programme for each of the proposals. As the evidence base nears completion the AAP Proposals Map is now being revised for use during consultation prior to publication of the Submission Draft AAP. The consultation process and preparations for it are outlined below.

Background to public consultation and information sharing

4.3 Extensive consultation has previously been undertaken during the course of development of the Area Action Plan. This is currently documented in the "Report of Consultation on the Alternative Options", June 2007 and the "Report of Consultation on Preferred Options published in September 2007. The entire consultation process and outcome (including changes made to the plan) will be drawn together in a redrafted "Consultation Statement" which will be submitted to the Planning Inspectorate as part of the submission draft AAP. The City Council needs to demonstrate that the consultation process has allowed for effective engagement of all interested parties and accords with the council's own "Statement of Community Involvement".

- 4.4 Government advice on the consultation process has changed as the LDF process continues to evolve. At the outset it appeared that consultation needed to involve the whole plan area and all proposals within it, now the advice is that “consultation should be proportionate to the scale of issues involved in the plan.” Through discussion with Government Office it is clear that consultation can be undertaken any time between now and deposit of the plan, with any groups or stakeholders we consider need to be informed of changes to be made to the plan prior to submission. There is no need to fully revise the plan and text prior to consultation, or to repeat the consultation process which took place at earlier stages involving exhibitions on the whole plan within communities during a specific 6 week timeframe. Consultation can take place on a much more informal and targeted basis with a timescale adapted to suit our requirements. The important issue is to ensure that those who are most directly affected, are made aware of changes to the plan and still have the opportunity to influence it.

Issues to be considered in consultation and information sharing

- 4.5 Significant changes between the Preferred Options and the deposit Draft AAP, which have currently been identified are summarised below. The most fundamental of these is the identification of future regeneration areas. The plan previously identified housing sites within three phases. Phases 1 and 2 involved either cleared sites, those previously allocated in the UDP or those for which clearance proposals had been published. Phase 3 involved sites largely occupied by existing housing. Considerable uncertainty exists regarding the scale of change within these currently developed areas and therefore it is extremely difficult to predict the amount of housing which may be delivered. The position will become much clearer when Neighbourhood Plans are prepared allowing a finer grained assessment of development opportunities and property condition within the area. In these circumstances it is not desirable to make firm allocations and it is more appropriate to identify potential for change by identifying them as “future regeneration areas”. A large scale copy of the Preferred Options AAP plan and the emerging submission draft AAP will be available at Development Plan Panel to assist in identification of the changes. These can be summarised as follows:

Seacroft

- Deletion of Seacroft town centre proposal and development of land off Ramshead Approach only for housing or mixed used i.e. no demolition in the Eastdeans and Hansby's.
- Proposed housing site H3 to be re- allocated as Future Regeneration area.
- Proposed housing site H10 to be re- allocated as Future Regeneration areas.

Halton Moor

- Deletion of part of housing site H23 (Rathmell Road area) and potential replacement by Future Regeneration area.
- Halton Moor potential change area to be redefined as a Future Regeneration Area, bringing it line with other longer term proposals within the plan.
- Deletion of proposed greenspace area and reallocation to site H21.

Osmondthorpe

- E1 is under consideration as mixed use development or housing.
- A railway station is not considered to be viable and the railway search area is therefore proposed for deletion.

Lincoln Green

- M10 reduction and replacement by Future Regeneration Area.

Burmantofts

- M5 reduction and replacement by Future Regeneration Area

Gipton

- 6 housing sites now Future Regeneration Area.
- Cemetery proposal site reallocated as a housing site.

- 4.6 Further changes may be necessary following completion of the town and local centre, transport and drainage strategies. These changes will need to be conveyed to residents through a variety of consultation and information sharing methods including residents meetings, forums, newsletters, and letters. Briefings will be offered to Ward Members and the MP's to update them and obtain further views.
- 4.7 A consultation strategy and list of meetings and events to be covered is being developed. Events currently identified are listed below. Advice is currently being sought on potential residents group meetings. The intention is to produce a leaflet listing significant changes within each neighbourhood. Officers intend to work with colleagues in Environment and Neighbourhoods and East North East Homes to convey a comprehensive message regarding change within the area. The consultation will therefore advise of new and up and coming initiatives more generally and will not focus entirely on the AAP.

Pre - Submission Consultation Summer 2009

Dates	Events
1 st June	Richmond Hill Burmantofts Forum
2 nd June	Osmondthorpe Forum
5 th & 6 th June	Wykebeck Valley Conference
6 th June	Cross Green Residents meeting
9 th June	EASEL Ward Member meeting
11 th June	ENEL Board
18 th June	Inner East Area Committee
4 th July	Seacroft Gala
7 th July	Outer East Committee
11 th July	Gipton Gala

- 4.8 The plan is to be redrafted in the light of further comments received and will be presented to the Development Plan Panel, Executive Board and Council prior to publication and submission to the Secretary of State. Once the plan has been published residents and all other stakeholders have 6 weeks in order to allow representations. This is not a consultation; all consultation must take place prior to this – it is merely the time allowed for representations. Any representations are then published and considered through the Examination process.

5.0 Legal and resource implications

- 5.1 Once adopted (following Independent Examination), the Area Action Plan will form part of the Development Plan for the area.

6.0 Implications for council policy and governance

6.1 None

7.0 Conclusions

7.1 This report has provided an update on recent progress on the preparation of EASEL AAP, and outlines the next steps, particularly relating to proposals for further consultation and information sharing on the proposed plan changes with residents and stakeholders.

8.0 Recommendations

8.1 The Development Plan Panel is asked to note the progress and next steps in relation to the preparation of the EASEL Area Action Plan and the next stages in production of the submission draft.

Background Papers

EASEL Area Action Plan Preferred Options – June 2007

Development Plan Panel Report – 6th January 2009 – Leeds Local Development Framework Area Action Plans: Progress Report

APPENDIX 1 Town, local and neighbourhood parades identified within EASEL

Location	Preferred Options proposal	Submission draft proposal	Comments
Cross Gates Town Centre	Town	Town	Small boundary changes to reflect existing uses.
Halton Town Centre	Town	Town	Small boundary changes to reflect existing uses.
Harehills Corner Town Centre	Town	Town	Small boundary changes to reflect existing uses.
Harehills Lane Town Centre	Town	Town	Maintain town centre extension proposal along Cowper Road. Review boundary in relation to former Tradex site.
Seacroft Town Centre	Town	Town	Small boundary changes to reflect existing uses. No longer proposing north-eastern extension into adjacent housing.
All Saints (Great Clothes), Richmond Hill	Local	Town	Developer interest in food store as anchor for wider regeneration and redeveloped local facilities (which would be unviable without a larger store).
Coldcotes Circus, Gipton	Local	Local	Although currently a neighbourhood parade, its location would provide a focus for future improvements and facilities for Gipton.
Lincoln Green	Local	Local	Retain centre in this location. Reference to moving the centre closer to the hospital to be deleted.
Upper Accommodation Road, Richmond Hill	Local	Local	Important to maintain role as focus for local community. Viability issues given internal location.
Oakwood Lane/Oak Tree Drive (Fearnville), Gipton	Local	Local	Although currently a neighbourhood parade, its location would provide a focus for future improvements and facilities for Gipton.
Shaftsbury Corner, Harehills	-	Local	Job centre and new health centre alongside local shops means the centre functions at higher level than a neighbourhood parade.
Harehills Road	-	Local	An important element of the unique retailing nature of Harehills, with the character of a local centre despite close proximity to 2 town centres.
Hollin Park	-	Local	On EASEL boundary but provides for some residents of Gipton and functions as more than a neighbourhood parade.
South Parkway, Seacroft	Local	N'hood parade	An active parade, however it only comprises retail units (including post office), and expansion is unlikely to be viable given the proximity to Seacroft town centre.
Halton Moor	-l	N'hood parade	Limited passing trade and lack of expansion opportunities for it to function as more than a n'hood parade. No longer proposing new centre due to viability issues and impact on existing parade.
Dawlishes and Iceland (York Road), Burmantofts	-	N'hood parade	Identified through survey as a neighbourhood parade.
Ivys (York Road), Burmantofts	-	N'hood parade	As above
Harehills – Roundhay Road/Roseville Road	-	N'hood parade	“
Harehills – Roundhay Road - Archway	-	N'hood parade	“
Selby Road (Halton Moor)	-	N'hood parade	“
York Road / Barwick Road	-	N'hood parade	“
Cross Gates Road	-	N'hood parade	“
Cross Green – Cross Green Lane / Easy Road	-	N'hood parade	“
Dib Lane – Hollin Park	-	N'hood parade	“
Easterly Road	-	N'hood parade	“
Gipton – Gipton Approach	-	N'hood parade	“

Gipton – Dib Lane	-	N'hood parade	“
Harehills Lane (north of Town Centre)	-	N'hood parade	“
Harehills Lane (south)	-	N'hood parade	“
Richmond Hill – East End Park	-	N'hood parade	“
York Road – Seacroft Hospital	-	N'hood parade	“

This page is intentionally left blank